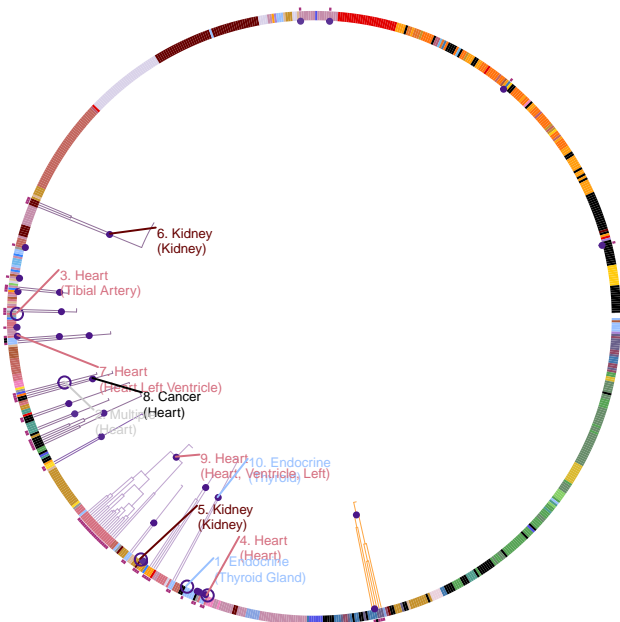


Ischemic stroke

29531354



34,217 European ancestry cases, 406,111 European ancestry controls, 17,369 East Asian ancestry cases, 28,195 East Asian ancestry controls, 2,437 South Asian ancestry cases, 6,707 South Asian ancestry controls, 5,541 African American cases, 15,146 African American controls, 222 Asian ancestry cases, 333 Asian ancestry controls, 555 Latin American cases, 692 Latin American controls