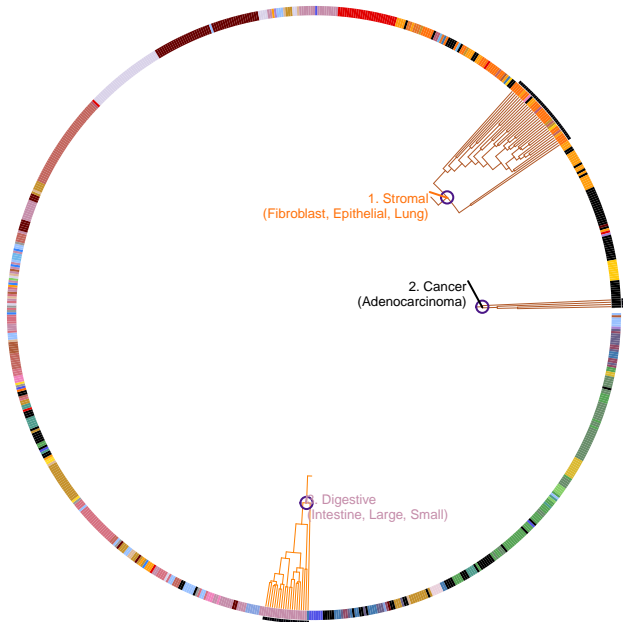


# QRS interval (sulfonylurea treatment interaction)

27958378



2,095 European ancestry exposed individuals, 42,907 European ancestry unexposed individuals, 1,167 African American exposed individuals, 10,564 African American unexposed individuals, 794 Hispanic/Latino American exposed individuals, 14,330 Hispanic/Latino American unexposed individuals